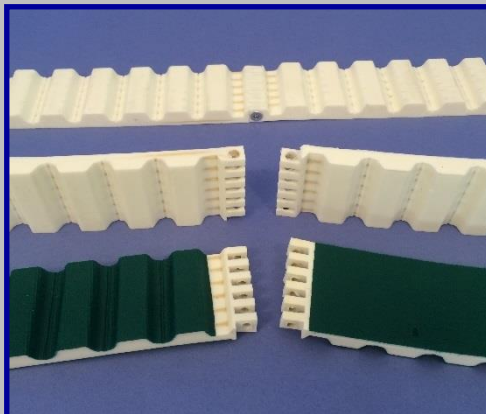
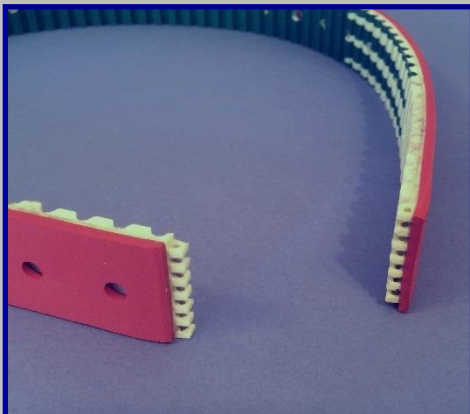




ERO Joint® HP also for Food Industry
So easy!



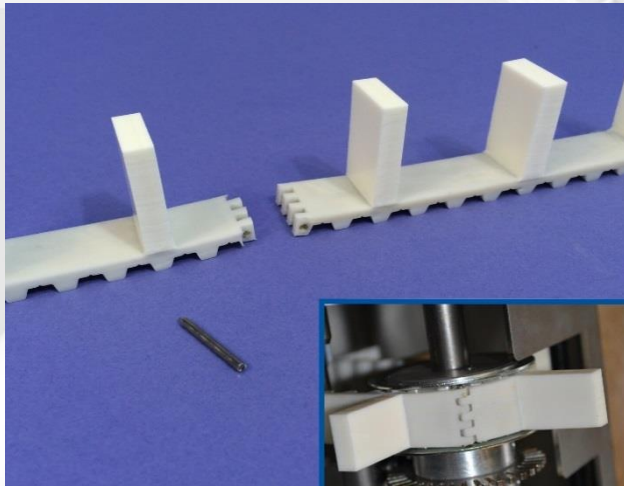
Polyurethane Timing Belts ERO Joint® HP (Hinge Pin) as strong as a welded joint (Patented)

Fast and Easy assembly. ERO Joint® HP belts are available with all types of coating and all types of guiding or machining.

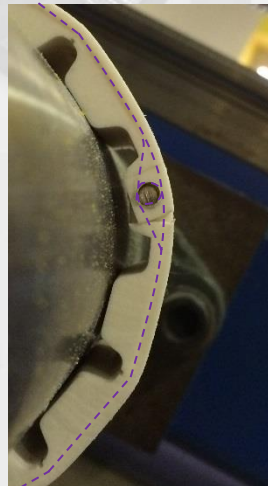
Mechanical strength and lifetime are greater than any other mechanical fastening systems.

Pitch available: H, T10, AT10, T20, AT20, 8M, 14M, AT5, **AT10V & T10V (integrated V-Guide, NEW)**
 Standard fabrication: Polyurethane 90 shore A light grey
 Cables: One polymer cable around the pin in each hinge teeth. Each cable is parallel to each other
 Width: Every width from 10 to 450mm (standard fabrication of junction plates is 150mm except AT5)

Pitch	8M	T10	AT10	H	14M	T20	AT20	AT5
Min. pulley diameter (mm)	51	44	47	56	124	95	115	23
Min. back bend diameter (mm)	120	80	120	79	200	120	180	60
Allowable tension force (N/25mm)	1871	1170	1871	970	2578	1871	2930	1030
The allowable tension force on the ERO Joint® HP is the same as the standard welded belt with steel cables								



16 T10 350 with cleats

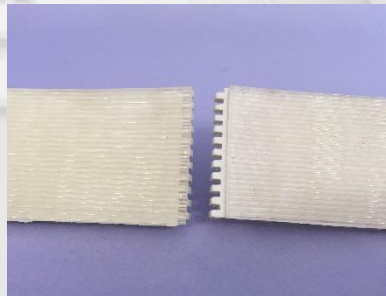
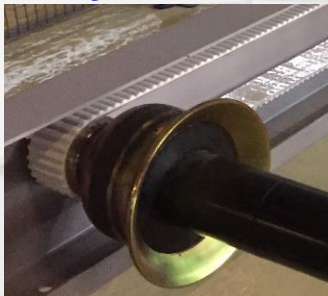


Cables symbolized dotted



V-guides and standards machining available on all pitches

Polyurethane Flat Belt ERO Joint® HP



Now use the power, fast and easy assembly of the ERO Joint® HP solution, for your flat belts system.

Reversed Timing Belt with Hinge Joint 1 axis, covered by PU ribs.

Contact us for more information.

ERO Joint® HP for Food Industry

Always Fast and Easy assembly.

With a polyurethane top surface that complies requirement of CE and FDA regulations.

Visit www.ero-joint.com for more information.

